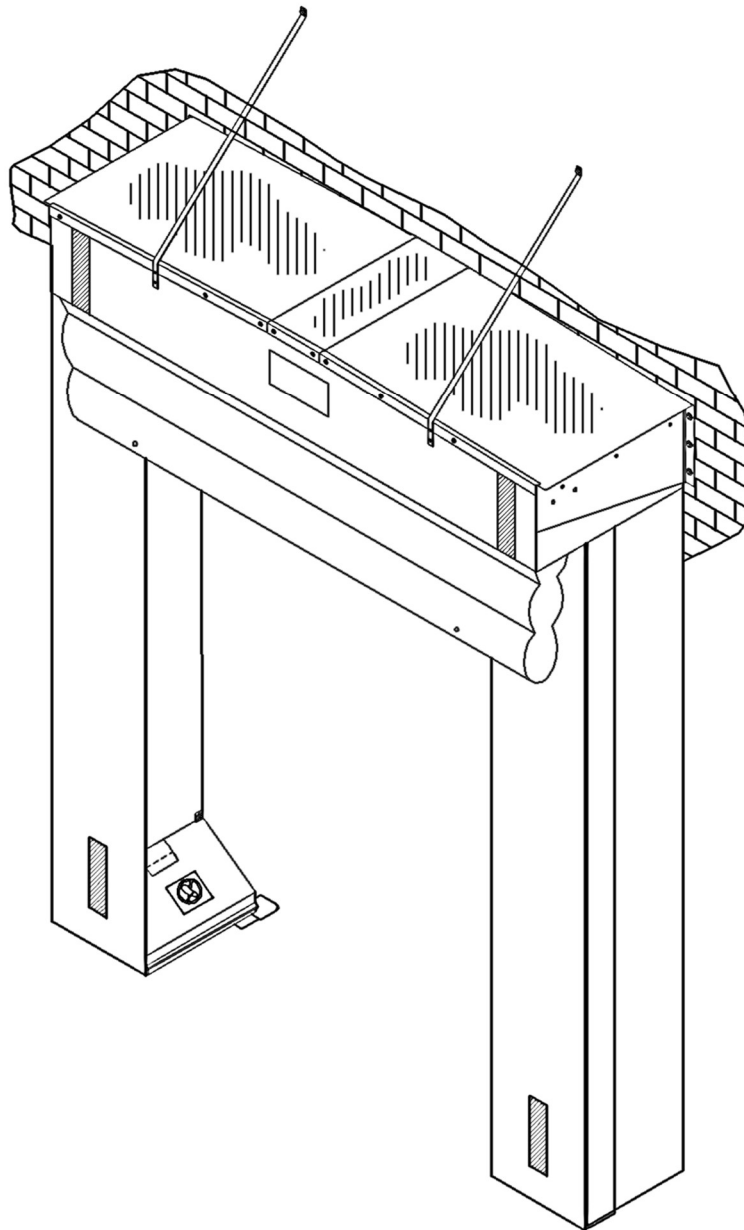


Dock Wedge – Combo 3

Inflatable Header-Wood Frame

READ ALL INSTRUCTIONS BEFORE INSTALLING SEAL. SUPER SEAL MFG. LTD. WILL NOT BE HELD RESPONSIBLE FOR IMPROPER INSTALLATION OF ANCHORING DEVICES, OR FOR INSTALLATION INTO AGED OR UNSOUND CONCRETE, CONCRETE BLOCK, OR OTHER WALL OR FLOOR MATERIAL WHICH MAY RESULT IN PREMATURE PRODUCT WEAR, PRODUCT FAILURE, PROPERTY DAMAGE, OR PERSONAL INJURY.



Header

No.	Description	Qty.
1	Header Canopy C/W Galvanized Steel Top Cladding	1
2	Canopy Side Supports	2
3	Header Side Curtain	2
4	Angle Trim	1
5	Head Curtain	1
6	Bungee Cable	2
7	Canopy Support Straps	2

Header Option

No.	Description	Qty.
8	Side Support Arms (if Applicable)	2

If Canopy Support Straps are used:

No.	Description	Qty.
7a	3/8" X 1-7/8" Sleeve Anchor	2
7b	#14 X 1-1/2" Flat Quad Screw	4
7c	3/8" B.S. Washer	4

&

Verticals

No.	Description	Qty.
1	Vertical Pads C/W Foam Core & Wood Backing	2
2	Removable Inward Panel	2
3	Angle Mounting Brackets	12
4	Phantom Draft Pads	2

Vertical Option

No.	Description	Qty.
9	Projection Boxes	2
9a	Angle Mounting Brackets	12
9b	#14 x 1-1/2" Flat Quad Screws	24

If Side Support Arms are used:

No.	Description	Qty.
8a	5/16" (18) X 1-3/4" Hex Bolt	4
8b	3/8" B.S. Washer	4
8c	5/16" (18) Hex Nut	4
8d	5/16" Lock Washer	4
8e	3/8" x 1-7/8" Sleeve Anchor	4

OR

Hardware Supplied List

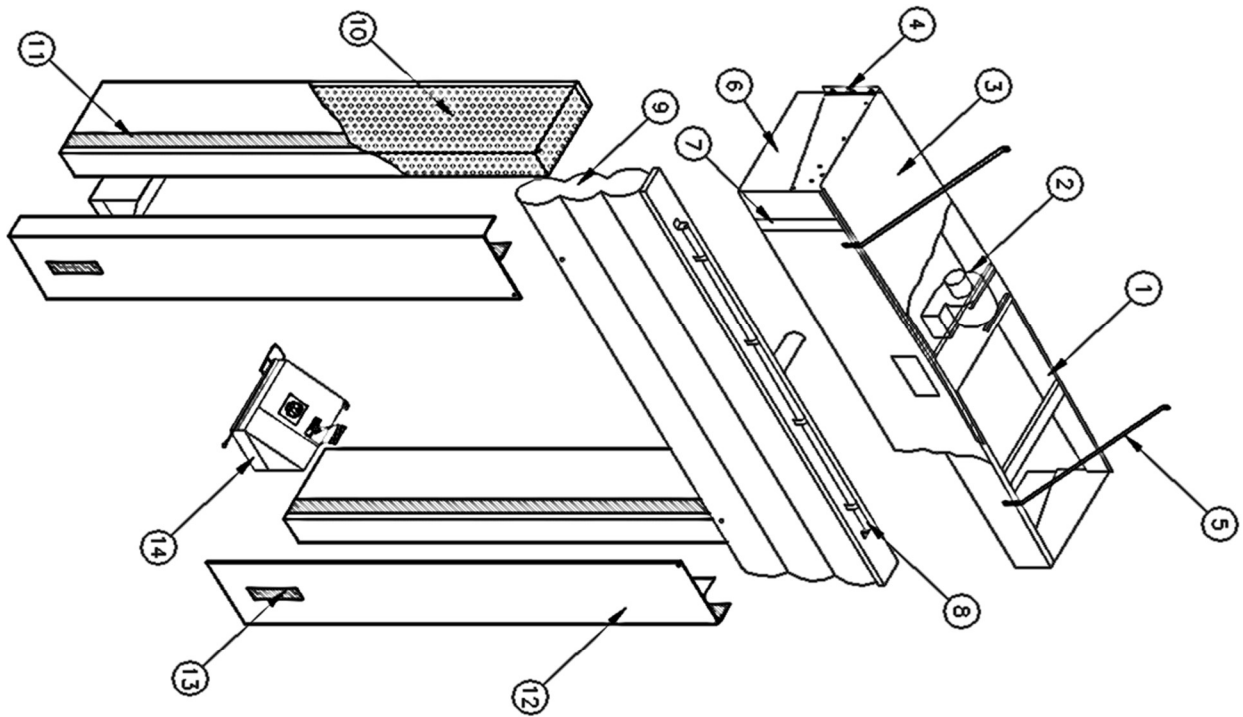
No.	Description	Qty.
1	3/8" X 1-7/8" Sleeve Anchor	18
2	3/8" X 3" Sleeve Anchor	4
3	#14 X 1-1/2" Flat Quad Screw	32
4	3/8" B.S. Washer	12
5	#10 X 3/4" Hex Washer Tek Screw - Zinc	10
6	1/4" B.S. Washer	8
7	5/16" B.S. Washer	2
8	1-1/2" Roofing Nails	10
9	Installation Instructions	1

Recommended Tools List (Typical Masonry Wall)

No.	Description
1	Tape Measure
2	Level
3	Pencil or Marker
4	Square
5	Power Drill
6	Caulking-Outdoor Acrylic Tape
7	1/2" Socket Wrench

&

No.	Description
8	Hammer Drill
9	Hammer
10	Robertson or Philips Driver #3
11	3/8" Masonry Drill Bit
12	Caulking Gun
13	Utility Knife
14	5/16" Hex Nut Driver



1. PRESSURE TREATED WOOD CANOPY
2. BLOWER / MOTOR
3. GALVANIZED COLOR STEEL CLADDING
4. SIDE SUPPORTS
5. CANOPY SUPPORT STRAP
6. STORAGE CURTAIN
7. YELLOW GUIDE STRIPE
8. TORSION SPRING ASSEMBLY
9. HEADER AIR BAG
10. POLYURETHANE FOAM CORE / WOOD BACKING
11. VELCRO
12. REMOVABLE INWARD PANEL
13. 4"W X 24"H YELLOW GUIDE STRIPE
14. PHANTOM DRAFT PAD / NO STEP

1. CHECK ORDER

a. Measure door opening width.

- i. Seal door opening varies according to the dimensions of existing door.
- ii. Make sure dimensions match purchase order.
- iii. Make sure there is enough space to install. Check for existing:
 - a. dock seals
 - b. bollard and obstacles
 - c. lights and conduit
 - d. drains

b. Check *Components List* and *Hardware Supplied List* to make sure all listed are present (Page 2).

c. Check *Recommended Tools List* and make sure all are available (Page 2).

d. Determine method of mounting shelter to wall.

- *Super Seal* supplies 3/8" sleeve anchors with the shelter. **The customer must supply any other mounting hardware.**

Recommended methods for:

A. **Concrete block, pre-cast concrete or brick wall:**

Use 3/8" sleeve anchors (supplied by *Super Seal*)

B. **Metal siding:** Use through-bolt fastening (supplied by others). Another alternative is to use wood lags with back plate from inside the building to back of seal.

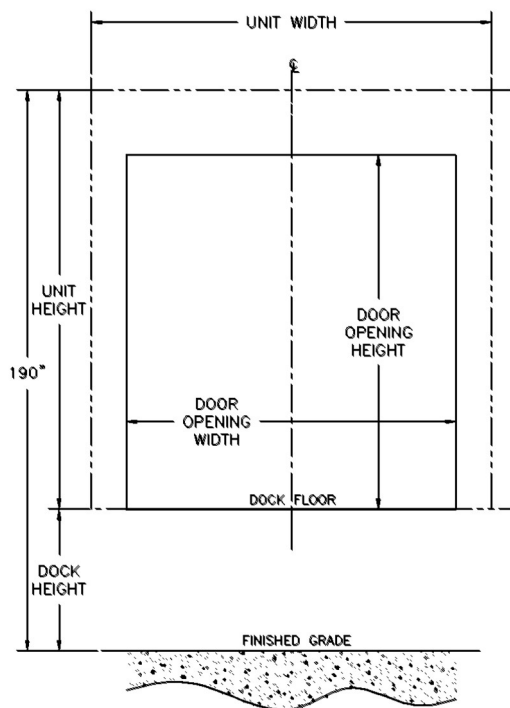


FIG. 1

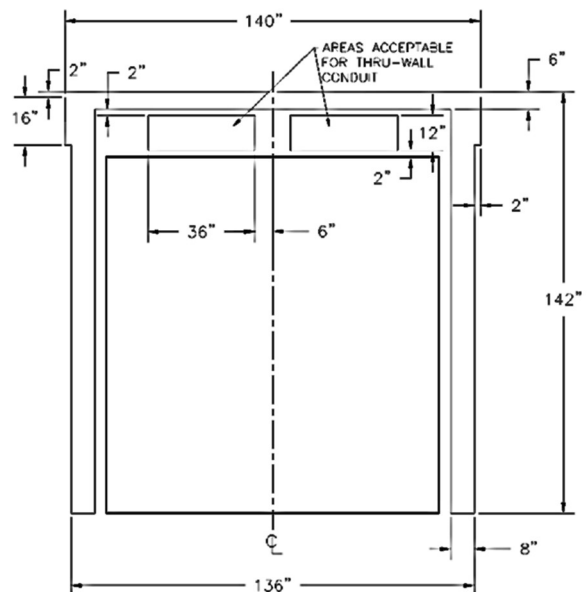


FIG. 2

NOTE: SUPER SEAL IS NOT RESPONSIBLE FOR INSTALLATION AND ANY DAMAGE OR INJURY CAUSED BY INSTALLATION OR THE PRODUCT. SAFE AND PROPER WORK PROCEDURES SHOULD BE FOLLOWED.

2. MARK CENTERLINE

- i. Locate the centerline of the door opening and mark on dock floor.
- ii. Mark centerline on lintel above door (Fig. 1).
- iii. Measure head frame width and mark.
- iv. Extend line 180" above finished grade.

**NOTE: Mounting footprint for 140"W x 142"H
(Standard unit size) (Fig. 2)**

3. MOUNTING HEAD FRAME

Refer To V-Model Installation for Mounting Head Frame.

NOTE: IF MOUNTING ON SIDING OR ON PR-CAST CONCRETE, FILL IN GAPS WITH POLYURETHANE FOAM.

NOTE: IF SIDE SUPPORT ARMS ARE PROVIDED INSTEAD OF CANOPY STRAPS SEE (FIG. 3)

NOTE: LOCATION OF SIDE SUPPORT ARM TO BE DETERMINED ON SITE AS TO ENSURE FLUSH MOUNTING AGAINST WALL AND HEADER FRAME.

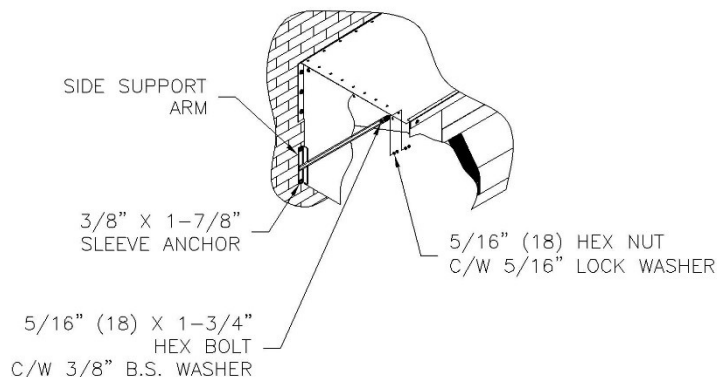


FIG. 3

6. MOUNTING BRACKETS TO VERTICAL PADS

- i. Fasten galvanized steel angle brackets, using No. 14 wood screws, to the inside and outside perimeter of each vertical pad (Fig. 4).

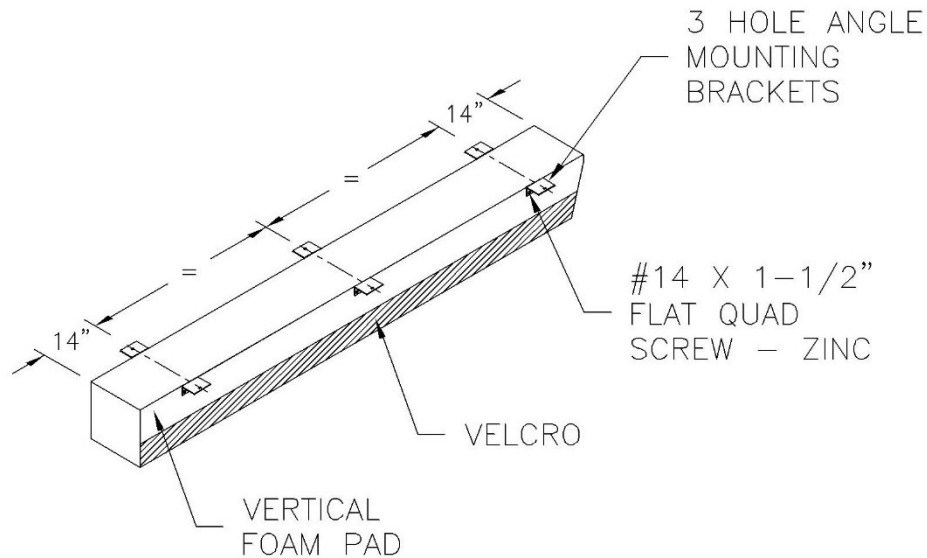


FIG. 4

NOTE: FINAL LOCATION OF BRACKET TO BE DETERMINED BY INSTALLER (FIG. 10) MOUNTING DIMENSIONS ARE A REFERENCE ONLY, TO SUIT SPACING OF THE MORTAR JOINTS OR OTHER WALL CONFIGURATIONS.

8. VERTICAL INSTALLATION – POSITION VERTICAL PADS

- i. The outside dimension of the vertical pads is determined by measuring the overall header width minus four inches (4").
- ii. Typical vertical mounting is 48" high above Finished Grade.

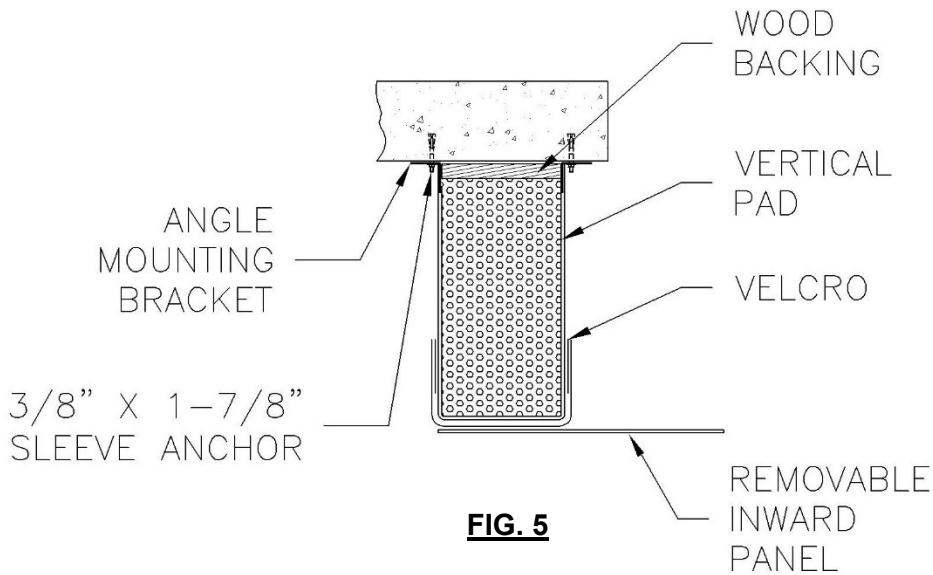
NOTE: ASSUME HEIGHT FROM FINISHED GRADE TO DOCK IS 48" HIGH

- iii. The bottom of the wood backing of the vertical pads should be even with the dock flood or at the top of the "above dock bumpers" on low docks.
- iv. Vertical pads must be plumb from top to bottom.

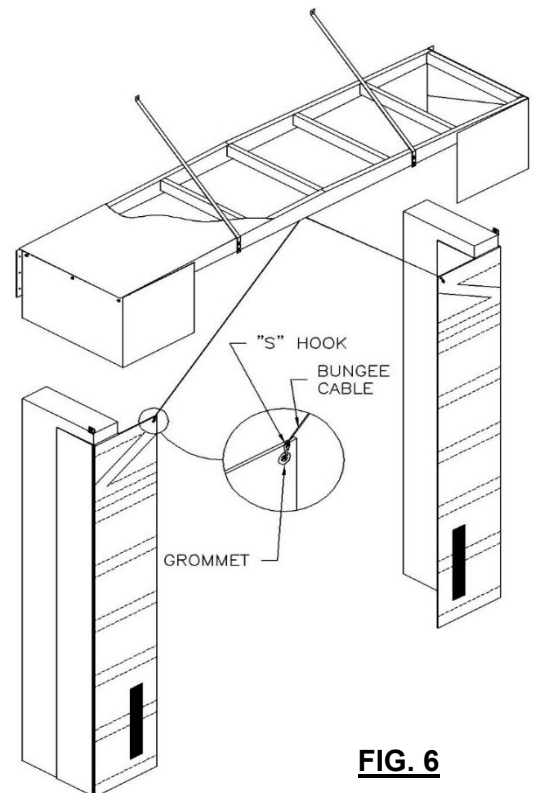
NOTE: LOCATION OF THE VERTICAL PADS SHOULD BE CHECKED AND CONFIRMED WITH CUSTOMER OR SALES AGENT IN ORDER TOP ENSURE PROPER LOCATION.

9. FINISHING INSTALLATION OF VERTICALS: MOUNT VERTICAL PADS TO WALL

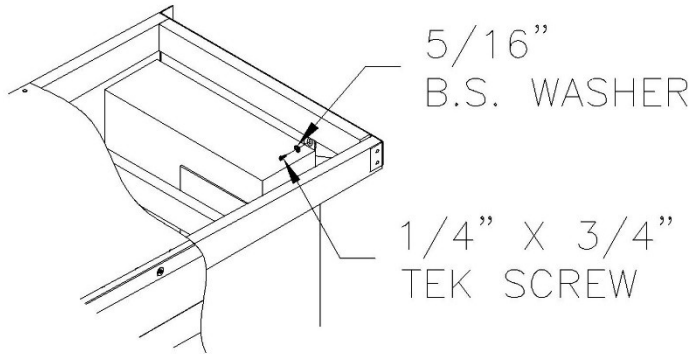
- i. Once the vertical pad is in position, drill a 3/8" hole into the mounting location and then drive a 3/8" sleeve anchor bolt (Fig. 5) through each bracket (**use holes provided**).
- ii. Once complete, repeat for remaining vertical pad.
- iii. Attach removable inward panels along the Velcro running the length of the vertical foam pad FLUSH form the bottom.



- iv. Attach the bungee cables to the removable inward panel by hooking the "S" hook through the grommets at the top corners of the left and right removable inward panels (Fig. 6).



- v. Secure verticals to header side supports by using supplied 1/4" tek screws & 5/16" washers through the tabs at the top corners of vertical pads (Fig. 7).



- vi. Attach phantom draft pad to bottom inside of vertical pads. **FIRST**, attach the back face of the phantom draft pad to the inside face of the vertical pad. **SECOND**, pull strap on phantom draft pad through loop on inside face of vertical pad and Velcro back onto phantom draft pad top face, attach the phantom pad bungee cables to the removable inward panels by hooking the "S" hook through the grommet on the back of the removable panel (Fig 8).

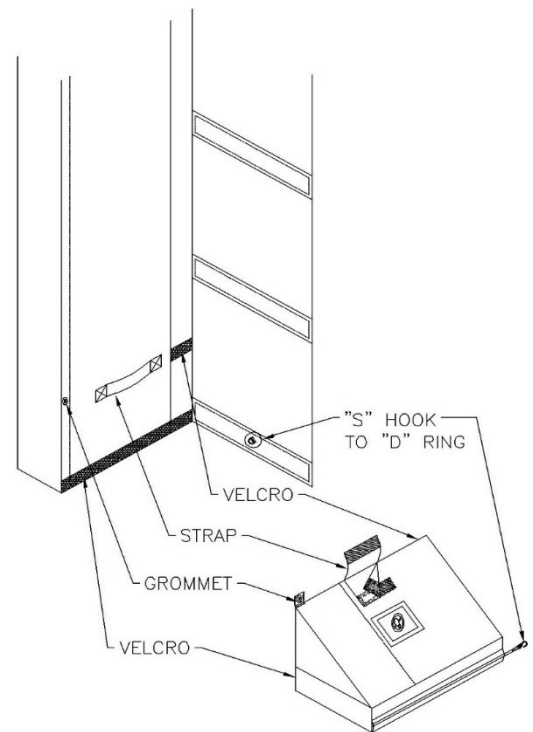


FIG. 8

NOTE: IF MOUNTING ON SIDING OR ON PRE-CAST CONCRETE, FILL IN GAPS WITH POLYURETHANE FOAM.

CAULK ALONG:

- i. Sides of vertical pads along wall.
- ii. Vertical mounting brackets.
- iii. Fill in any remaining gaps around unit as needed